



# MASTER-TROL PLUS PACKAGE

**RETROFIT APPLICATION:**

**1 COMBY UNITS**

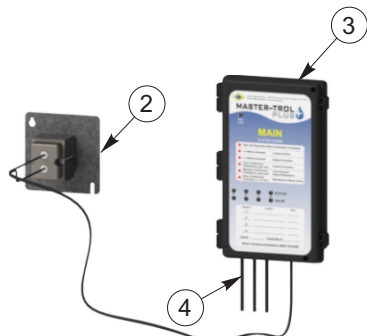


**EZ-MTP PRE-PROGRAMMED SETTINGS:**

**LAVY:** WILL HAVE A 10-SECOND RUN TIME WITHOUT A LOCKOUT TIME PERIOD.

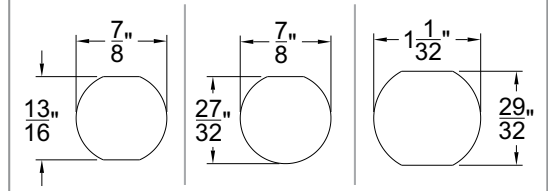
**TOILET:** WHEN FLUSHED 2 TIMES WITHIN A 5-MINUTE PERIOD, THE FLUSH VALVE WILL BE LOCKED OUT AND WILL BE UNABLE TO FLUSH FOR 15 MINUTES.

**ORDER SKU: EZ-MTP-LTC**

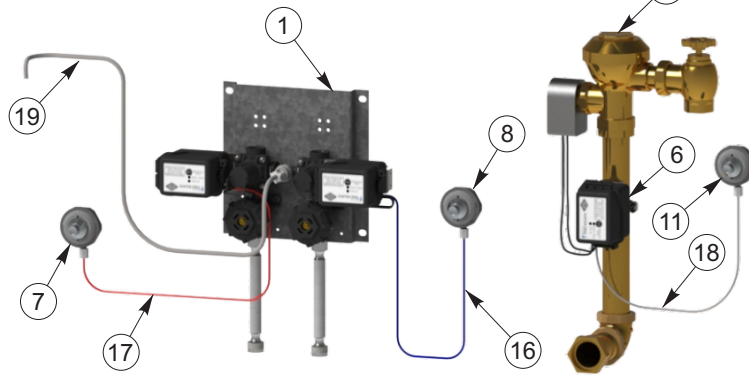
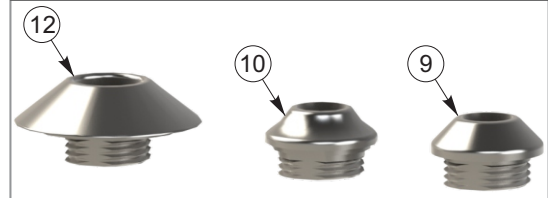


Quantity: 1

**PUSHBUTTONS WILL ACCOMMODATE:**



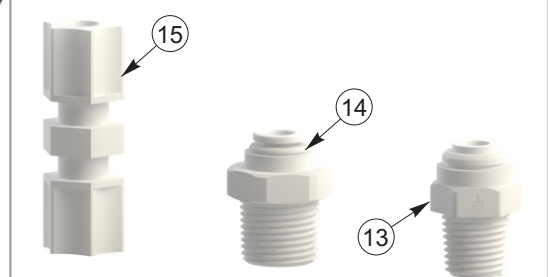
**PUSHBUTTON ESCUTCHEONS:**



Quantity: 1

Quantity: 1

**TUBING TO BUBBLER ADAPTERS:**



ITEM #	COMPONENTS PROVIDED
1	-MTP2 H&C 0.5 GPM Valve Assembly (Pneumatic)
2	24VAC, 50 VA Transformer with 4" X 4" Mtg. Plate
3	MTP Main Controller
4	MTP Station Cable (CaT 5e) 15'
5	Electronic Solenoid Operated Flush Valve, 1.28 GPF
6	-MTPFV Flush Valve Branch Box Assembly
7	Hot Pushbutton Assembly
8	Cold Pushbutton Assembly
9	7/8" Double "D" Punch Pushbutton Escutcheon
10	1-1/32" Double "D" Punch Pushbutton Escutcheon

ITEM #	COMPONENTS PROVIDED
11	Flush Valve Pushbutton Assembly
12	1-1/2" Pushbutton Escutcheon w/ 7/8" Double "D" Punch
13	1/4" O.D. Tube x 1/4" NPT Male Adapter
14	1/4" O.D. Tube x 3/8" NPT Male Adapter
15	1/4" O.D. Tube Union
16	1/8" Blue Tubing for Pneumatic Cold Activation, 10'
17	1/8" Red Tubing for Pneumatic Hot Activation, 10'
18	1/8" Clear Tubing for Pneumatic Flush Valve Activation, 10'
19	1/4" Clear Tubing from Valve Supply to -BP Penal Bubbler, 10'

Please visit [www.acorneng.com](http://www.acorneng.com) for most current specifications.

